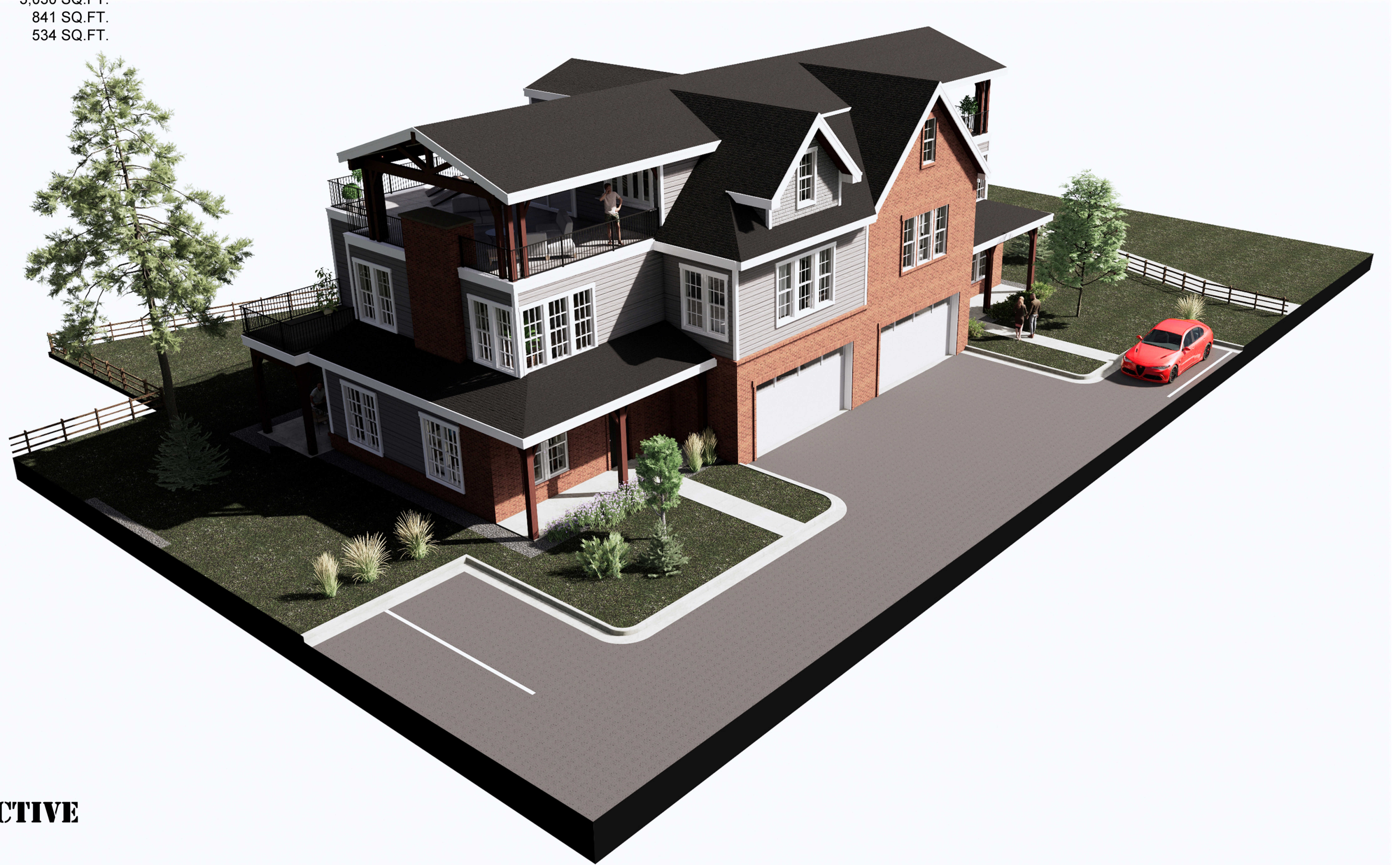


THE BRAY (NORTH)

FIRST FLOOR	1,104 SQ.FT.
SECOND FLOOR	1,559 SQ.FT.
THIRD FLOOR	367 SQ.FT.
TOTAL FINISHED	3,030 SQ.FT.
ROOF TOP PATIO	841 SQ.FT.
GARAGE	534 SQ.FT.

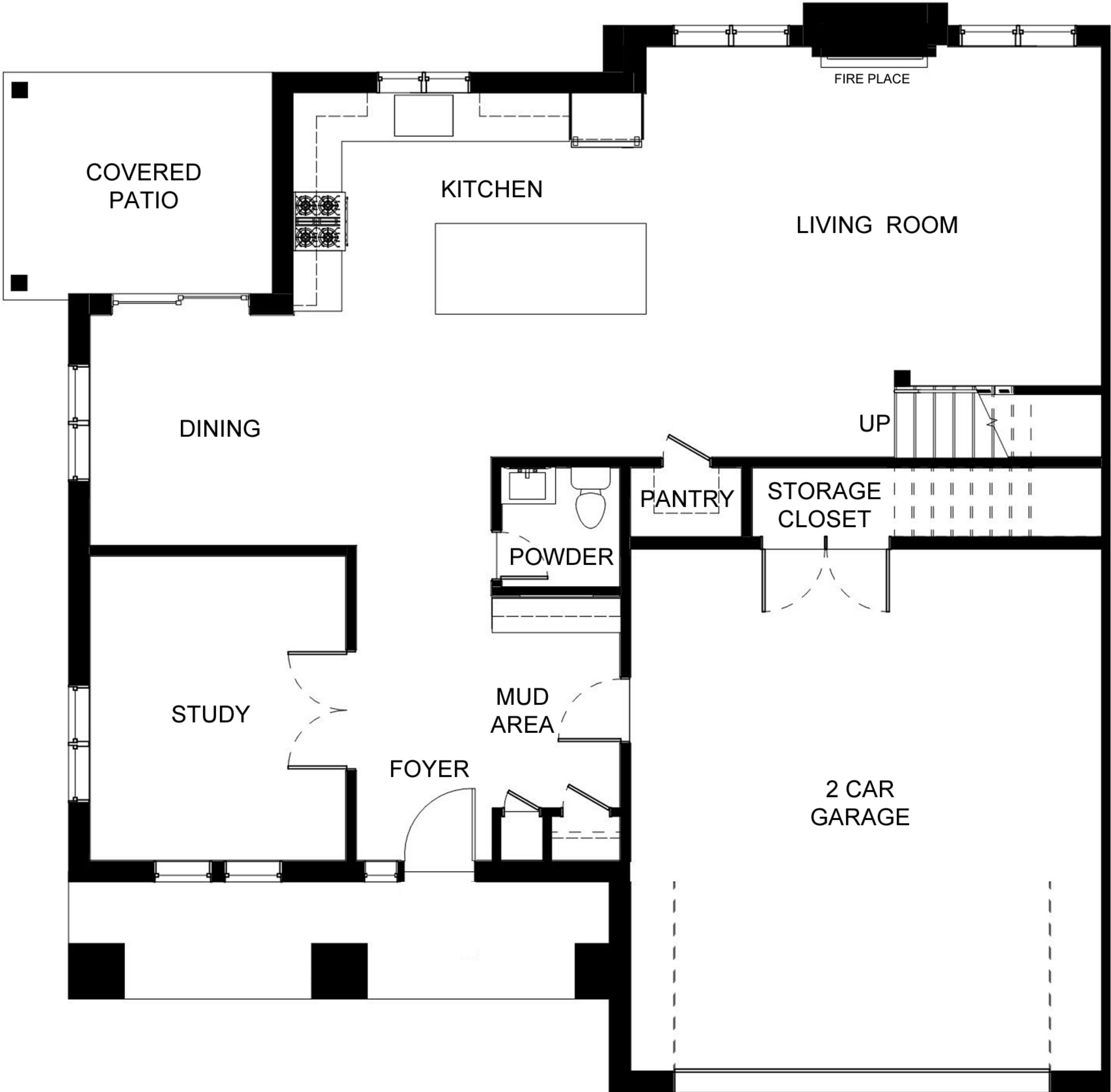


ENTRY PERSPECTIVE

THE BRAY (NORTH)

FIRST FLOOR	1,104 SQ.FT.
SECOND FLOOR	1,559 SQ.FT.
THIRD FLOOR	367 SQ.FT.
TOTAL FINISHED	3,030 SQ.FT.
ROOF TOP PATIO	841 SQ.FT.
GARAGE	534 SQ.FT.

FIRST FLOOR PLAN



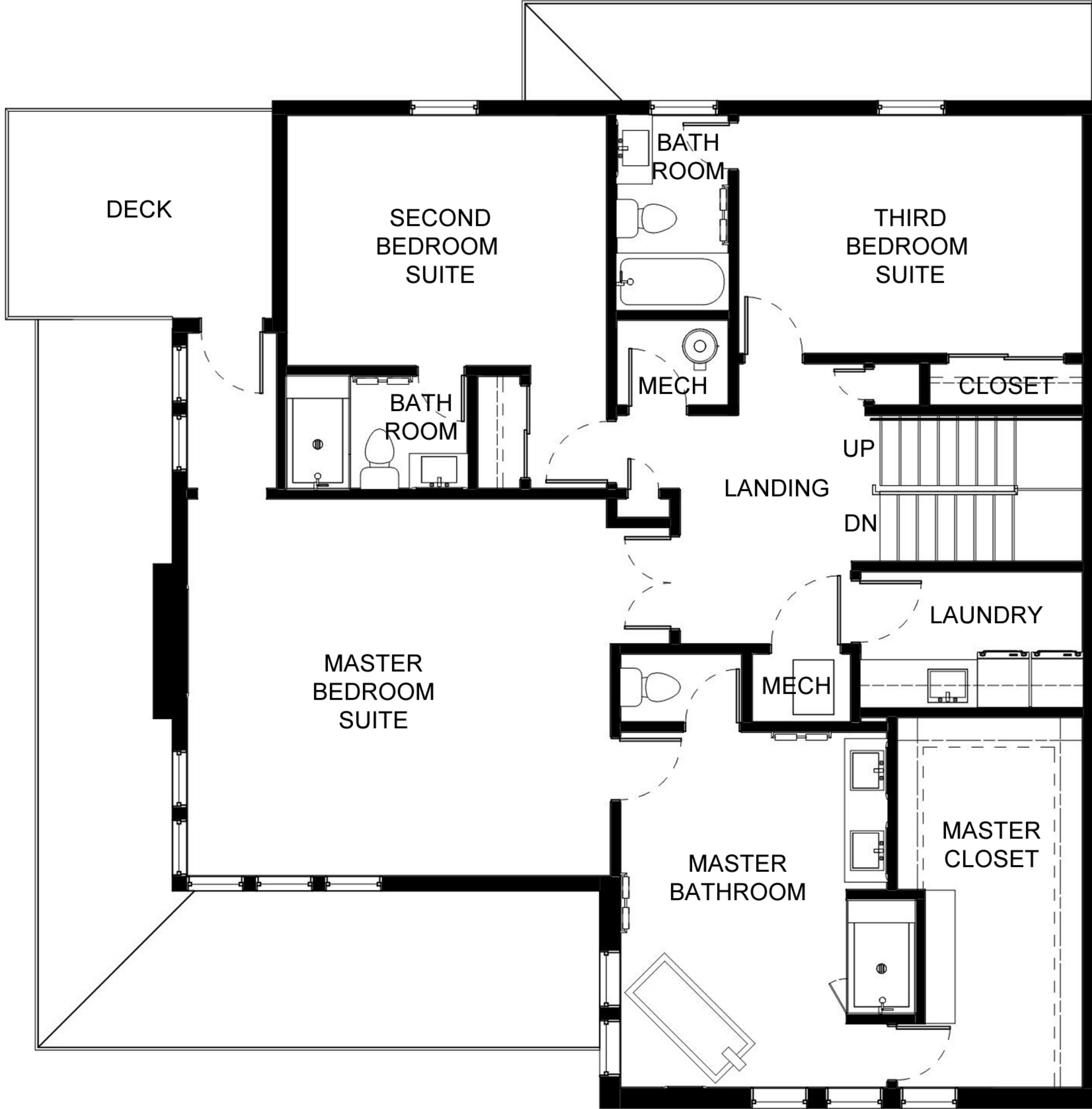
FIRST FLOOR PERSPECTIVE PLAN



THE BRAY (NORTH)

FIRST FLOOR	1,104 SQ.FT.
SECOND FLOOR	1,559 SQ.FT.
THIRD FLOOR	367 SQ.FT.
TOTAL FINISHED	3,030 SQ.FT.
ROOF TOP PATIO	841 SQ.FT.
GARAGE	534 SQ.FT.

SECOND FLOOR PLAN



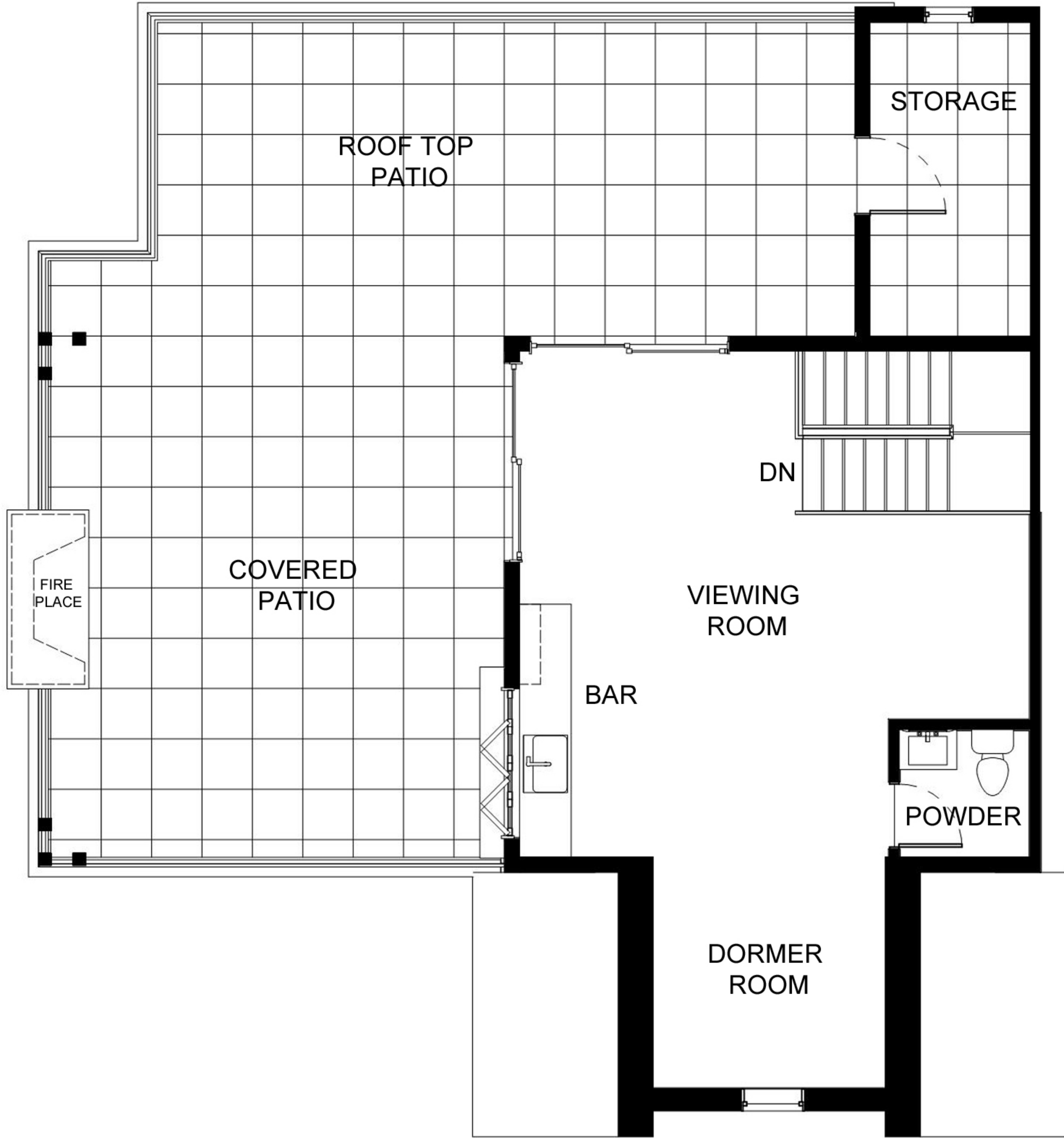
SECOND FLOOR PERSPECTIVE PLAN



THE BRAY (NORTH)

FIRST FLOOR	1,104 SQ.FT.
SECOND FLOOR	1,559 SQ.FT.
THIRD FLOOR	367 SQ.FT.
TOTAL FINISHED	3,030 SQ.FT.
ROOF TOP PATIO	841 SQ.FT.
GARAGE	534 SQ.FT.

THIRD FLOOR PLAN



THIRD FLOOR PERSPECTIVE PLAN

